

93 rue de la liberté  
93230 ROMAINVILLE  
Tel : (33) 01 41 71 18 22  
Fax : (33) 01 41 71 18 23

E-mail : [commercial@agelec.fr](mailto:commercial@agelec.fr)

**Agelec MUR D'IMAGES**

**3m08 x 1m76**  
**Résolution 4080 x 2304**

**LCD bords ultra fins**  
**7,3 mm entre les contenus**

Solutions Plus  
REVENDEUR AGREE  
NED DISPLAY SOLUTIONS

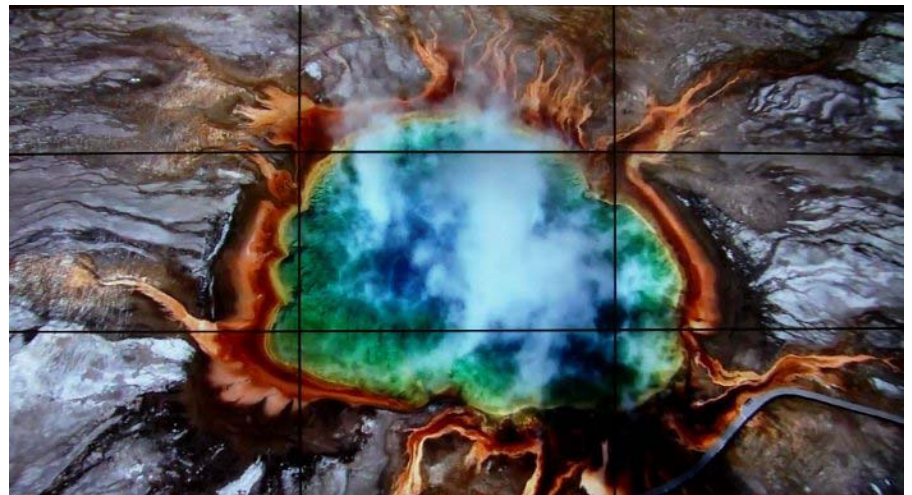
RGB  
SPECTRUM

## Video Wall Description



## TFT screens with ultra narrow bezels

- Command stations
- Crisis Rooms
- Urban Supervision
- Geolocation
- Security control rooms
- Process Control



<http://www.agelec.fr/>

## Shown configuration

### Description and main features of the Videowall

**Composition:** 9 TFT monitors 46" with **EXTRA thin borders** ref: **LCD X462UN** (7,3 mm between displayed contents)

1 graphic controller ref: **MEDIAWALL 4500 4V8I/12**

9 DVI cables of 10m each between controller and screens

1 Aluminium structure

☞ **Wall dimensions:** **3m08 x 1m74**

☞ **Global resolution of the Wall:** **4098 x 2304**

☞ **Brightness 500 Cd/m<sup>2</sup>** (Max 700) contrast 3000:1  
Viewing Angles 178° Vertical & Horizontal

☞ **Number of sources that can be linked to the controller: 20**  
**8** graphic videos HD15 and **8** DVI videos  
**4** composites (BNC) or **S-Video** or **RVB** videos  
This number can be extended with the use of a matrix

☞ **Number of sources that can be simultaneously displayed:**  
**8** graphic vidéos (HD15 or DVI)  
**4** videos (composite or S-Video)

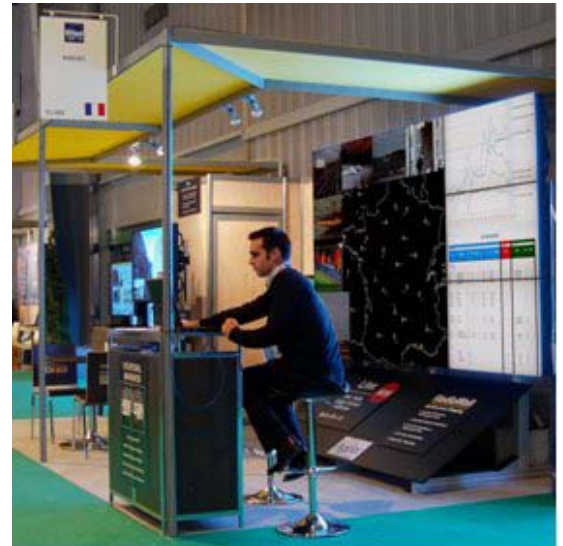


photo Milipol 2009

☞ **Evolution:** The modular conception of the controller will allow further **extensions:**

Wall Extension **up to 12 screens** (included in this configuration)

The extensions are made by adjunctions of output cards (Modulo 4 screens by card)

Possibility to **connect several controllers** for bigger Videowalls

Extension **up to 30 display-able sources** simultaneously on the wall

The extensions are made by adjunctions of input cards (Modulo 2 sources by card)  
Graphic or video input cards

☞ **Maintenance: None** (No lamps) and screen warranty of 3 up to 5 years

☞ **Fully Operational in "real time":**

All graphic or video inputs connected to the controller are viewed in real time accurate within a frame.  
No pictures loss.

☞ **Operating system integrated, no software to install:**

The controller is stand-alone and driven through a simple Ethernet link to a driving PC.

You just need to connect yourself to the controller IP address and the command panel will be automatically displayed. (JAVA Applet)

☞ **Security (SSI):** The sources are connected to the controller directly in video BNC, VGA or DVI etc. **No linking to a network is necessary**, only the driving PC has to be linked via an Ethernet cable to the controller.

☞ **Direct control on the wall:**

It is possible, through activation on the wall of one virtual cursor, to move, resize, or display in full screen, all the active windows "live".

## ☛ KVM Option

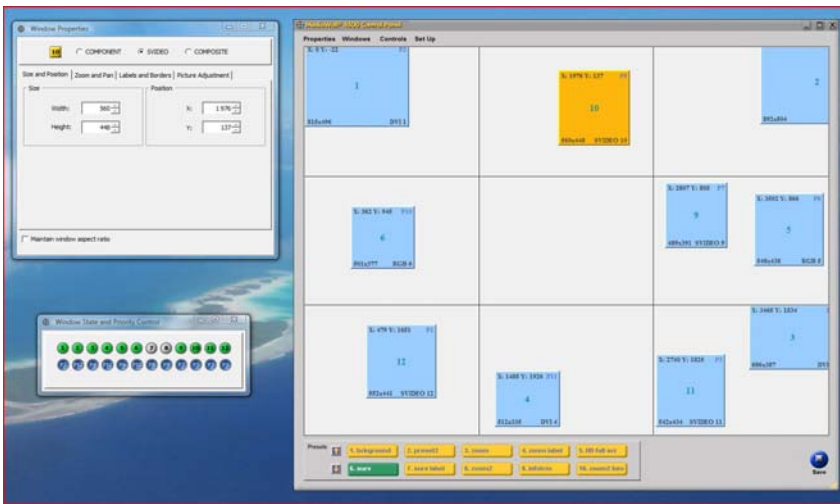
This feature allows to work directly on the wall (windows position and dimension) and above all to get **control on the displayed graphic pictures**.

In that case, and in that case only, a network connection of the controller with the concerned computers is necessary.

## ☛ Other advantages of the MW 4500 Controller

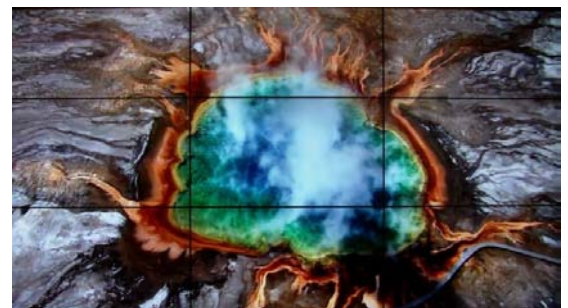
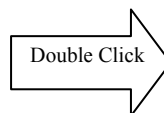
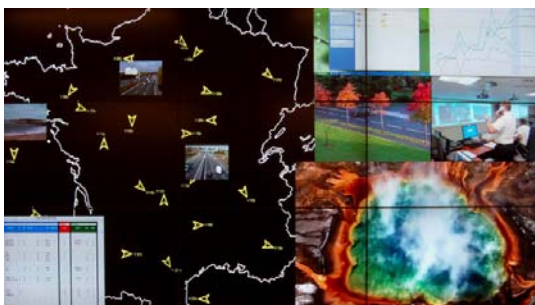
- Robust Conception 24 h a day, 7 days a week (redundant power supply)
- No vulnerabilities like on the PC
- No Hard Drive
- Plug and Play Architecture
- DVI Input Cables equalization
- Possibility to supply power to active DVI cables for lengths superior to 10 m

## ☛ User friendly and ergonomic Control Interface : Main features



**Direct control on the wall**  
Example of resizing with **virtual cursor**

- **Move the windows** by simple drag and drop
- Resize the windows by clicking on the angles or on the sides, and setting possibility accurate within a pixel using the interface.
- **Instant switch** to a **full screen** window with a simple **double click**



- Right mouse click to display a selected window in **full screen on one of the monitors**.
- In both cases, a simple double click will call back the previous position
- **Colorimetric Settings:** individuals on each window.  
(Brightness, Contrast, Saturation.)

- **Choice to display only the windows you wish** among all connected inputs (green buttons)



- **Definite the windows priorities** from one to another in case of overlay or overlap (blue buttons)

- **Possibility to zoom in a window** in a way that only the useful part of an input source will be represented on the wall in an optimal size for the users.



- **Framing**
- **Labelling**

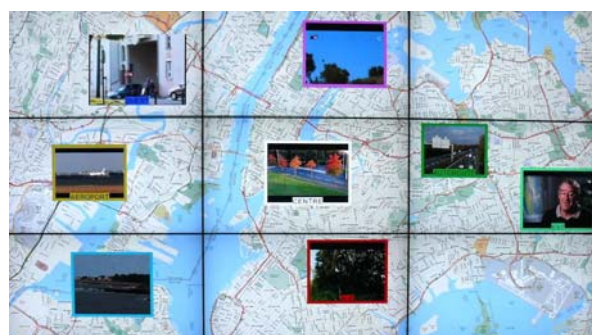


- **Recording** of all parameters defined via the Save button in one of the

**50 presets**



- **Auto Call-Back of a preset** clicking the corresponding button. (This functionality can also be achieved via RS232 or Ethernet like all other commands).
- **Definition of a background or loading colour** through a memory card with background pictures (see mapping example below) to the global resolution of the wall.



- Possibility to display and place a **clock** or a **LOGO** (Option) on the wall.