

# CHRISTIE DS+65

*High Brightness, High Contrast for Presentation Power*

## Uses

Boardrooms

Large conference rooms

Small auditoriums

Rental/Staging

Worship

The Christie DS+65 delivers exceptional image clarity and dynamic range for crisp, clean images.

The brightest single-chip projector on the market, the Christie DS+65 combines SXGA+ resolution with high performance optics to create high brightness when needed. It has a variable contrast ratio for the blackest blacks and the presentation punch for boardrooms, auditoriums and houses of worship.

Delivering up to 6500 lumens in dual lamp mode and a variable contrast ratio up to 7500:1, the Christie DS+65 features on-board Faroudja® DCDi processing for artifact-free video reproduction. Detailed images with unbelievable punch and power are the result.

Its compact size and low acoustic noise offer presentation confidence and installation flexibility. With high quality lens options and a broad range of standard inputs, the Christie DS+65 is flexible and customizable – install it anywhere, connect to virtually anything.

Long life dual lamps and a sealed optical engine provide a low cost of ownership. And with the best price performance on the market, extensive warranties and service second to none, the Christie DS+65 is the clear choice for your best image.

The Christie DS+65 – crisp, detailed images with presentation power.



# Christie DS+65

## Specifications



*The Christie DS+65 uses dual 300W UHP lamps – for long life performance and low cost of ownership.*

### IMAGE

- 6500 ANSI lumens (dual lamp)
- 3000 ANSI lumens (single lamp)
- 90% brightness uniformity across the screen
- Contrast ratio: variable, 1200:1 up to 7500:1 (max on/off)

### DISPLAY TECHNOLOGY AND RESOLUTION

- 1-chip 0.95" Darkchip3™ DMD
- True SXGA+ 1400 x 1050 resolution
- Sealed, all-glass optical design

### INPUT SIGNAL COMPATIBILITY

- VGA through to UXGA (1600 x 1400)
- Accepts all current HDTV/DTV formats
- Horizontal and vertical scaling, all inputs

### SCAN RATES

- Horizontal: 15 to 150 kHz
- Vertical: 48 to 190 Hz

### LENS MOUNT

- User replaceable bayonet style lens mount
- Full lens shift: 110% vertically, 90% horizontally
- Motorized zoom/focus/shift for all lenses

### POWER REQUIREMENTS

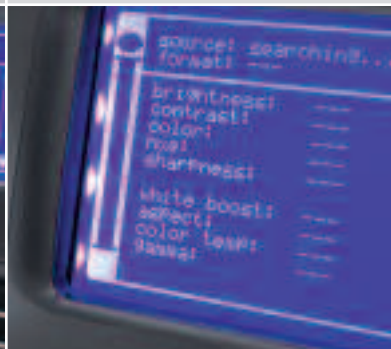
- Line voltage 100 VAC to 240 VAC ± 10% @ 50/60 Hz
- Power consumption: 850W maximum
- Thermal dissipation: 2900 BTU/hr maximum

### STANDARD ACCESSORIES

- Line cord
- Wireless remote unit with laser pointer
- User manual
- Computer cable
- Wired remote control cable
- USB cable
- S-Video cable



*With a broad range of standard inputs, the Christie DS+65 is flexible and customizable.*



*The large backlit LCD display shows all status information from current source to lamp status, operating hours and all possible settings.*

### PIXEL CLOCK

- 205 MHz (analog)
- 165 MHz (digital)

### INPUTS, CONTROL & NETWORKING

- RGBHV/YpBp: 5 BNC
- DVI-D (HDCP)
- 1 composite video, 1 S-Video
- 2 - XPort (1x front end, 1x back end)
- ChristieNET™ compatible via RJ45 connectivity
- IR remote control and built-in keypad

### LAMP

- Dual 300W UHP™ lamps
- Lamp life: 6000 hrs (eco relay mode); 3000 hrs (eco dual mode); 1700 hrs (full power mode)
- Variable lamp power

### DIMENSIONS

- Weight: 27.8 lb (12.6 kg) excluding lens
- Size: 14.8 L x 20.0 W x 8.8 H" (376 x 510 x 223mm)

### OPTIONAL ACCESSORIES

- Fixed lenses: 0.8:1, 1.2:1
- Zoom lenses: 1.3-1.7:1, 1.7-2.5:1, 2.5-4.0:1, 4.0-7.0:1
- Shipping case
- Ceiling mount
- Stacking kit

### OPERATING ENVIRONMENT

- Operating temp: 32 to 105° F (0 to 40° C)
- Operating altitude: 0 – 10,000 ft (0 – 9144m)
- Operating humidity: 20 – 90%
- Audible noise: 30dB (low power mode)

### REGULATORY APPROVALS

- UL/CSA/IEC 60950 (3rd edition)
- FCC Class A, CE, CCC
- This product conforms to all relevant European directives, standards, safety, health and environmental concerns
- RoHS and WEEE compliant

### WARRANTY

- 2 years parts and labor (including light engine)
- Lamp: 120 days or 500 hrs, whichever comes first



### Corporate Offices

USA  
10550 Camden Drive  
Cypress, CA 90630  
PH: 714-236-8610  
FX: 714-503-3385  
Toll free: 866-880-4462 (NA only)  
sales-us@christiedigital.com

### CANADA

809 Wellington Street North  
Kitchener, Ontario N2G 4Y7  
PH: 519-744-8005  
FX: 519-749-3136  
Toll free: 800-265-2171 (NA only)  
sales-canada@christiedigital.com

### Worldwide Offices

UNITED KINGDOM  
PH: +44 118 977 8000  
FX: +44 118 977 8100  
sales-europe@christiedigital.com

GERMANY  
PH: +49 2161 664540  
FX: +49 2161 664546  
sales-europe@christiedigital.com

FRANCE  
PH: +33 (0) 1 47 48 28 07  
FX: +33 (0) 1 47 48 26 06  
sales-france@christiedigital.com

HUNGARY  
PH: +36 (0)1 47 48 100  
FX: +36 (0)1 47 48 452  
sales-eeurope@christiedigital.com

SINGAPORE  
PH: +65 6877 8737  
FX: +65 6877 8747  
sales-singapore@christiedigital.com

SHANGHAI  
PH: +86 21 6278 7708  
FX: +86 21 6270 5816  
sales-china@christiedigital.com

BEIJING  
PH: +86 10 6561 0240  
FX: +86 10 6561 0546  
sales-china@christiedigital.com

KOREA  
PH: +82 2 702 1601  
FX: +82 2 702 1602  
sales-korea@christiedigital.com

JAPAN  
PH: +81 3 3599 7481  
FX: +81 3 3599 7482  
sales-japan@christiedigital.com

For the most current specification information, please visit [www.christiedigital.com](http://www.christiedigital.com)

Copyright 2006 Christie Digital Systems, Inc. All rights reserved. All brand names and product names are trademarks, registered trademarks or tradenames of their respective holders. Canadian manufacturing facility is ISO 9001:2000 certified. The DLP™ logo and DLP™ Medallion are trademarks of Texas Instruments.

Performance specifications are typical. Due to constant research, specifications are subject to change without notice. Printed in Canada. 2060

Jun 06-NA