



CONRAC 6046 PD

46" LCD/TFT Display
in 16:9 format
with/without integrated controller (GEB8)

The large screen full colour LCD/TFT monitor CONRAC 6046 PD has been specially designed for applications in public information systems, e.g.

- Point-of-Information
- Point-of-Sales
- Point-of-Waiting
- Seminar-/Conference-Rooms, Videoconferencing
- Reception Areas, Hotels, Sports Facilities, etc.

CONRAC GmbH stands for High Performance Displays for specific applications. Own R&D, production and service at the German headquarter guarantee the highest quality standards.

The use of high grade industrial components, modular construction, robust aluminium housing and special laminated safety glass panel with high efficiency anti-glare treatment make the displays the perfect choice for 24h operation in demanding applications.

FEATURES

Robust aluminium cabinet

Suitable for applications in public areas

Laminated safety glass with high efficiency anti-glare treatment

Superior legibility and safety for applications in public environment

Different models with or without integrated graphic engine board

Highly flexible use in public information systems: Available for connection to standard PC systems or with integrated GEB for networked systems (allowing control and monitoring of key display functions from a central server in the network.)

High quality direct digital interface & gamma correction circuitry

Superior picture performance without jitter, phase- or scaling errors. True colour display of graphics and video (i.e. logos)

Designed for reliable operation in landscape and portrait mode applications

Best possible adaptation to local display needs

Infrared keyboard / remote control (OSD)

For wireless control of display functions

ALC (Ambient Light Control)

Extended display lifetime by automatic adjustment of brightness depending on the actual ambient light conditions

Modular design

Guarantees high overall system availability and easy maintenance

Conrac electronics and design

In-house R&D ensures long term availability

DISPLAY

Size/diagonal:	46" – 117cm, 16:9 format
Active screen dimensions:	1018mm (horizontal) x 572mm (vertical)
Resolution:	Max. 1366 x 768 pixels
Colour performance:	16.7 Mio colour simultaneously (full colour)
Viewing angle:	170° typical
Contrast Ratio:	1.000:1 typical
Brightness:	500 cd/m ² (max.)
Safety/contrast enhancement panel:	anti-glare, 85% light transmission typical

6046 PD GEB8 (with Graphic Engine Board)

GEB8 Basic

	Basic GT2 (Standard GEB8 Configuration)	Basic Windows
Processor:	Intel Celeron M 1,5 GHz	Intel Celeron M 1,5 GHz
Memory:	256 MB Compact Flash	40 GB HDD 2,5 inch
DDRAM2:	512 MB	512 MB
Video Memory:	64MB (shared)	64MB (shared)
Network:	Ethernet 10/100 BaseT network adapter	Ethernet 10/100 BaseT network adapter
Serial Interface:	1 x RS 232, 1 x RS 485, 2 x USB 2.0	1 x RS 232, 1 x RS 485, 2 x USB 2.0
Watchdog:	Hardware Watchdog	Hardware Watchdog
Software:	TCP/IP license, ROMDOS license, GT2 software installed on FlashDisk	Windows XP Embedded, installed on HDD

GEB8 Multimedia

MPEG2 decoder (allows programmable cropping and positioning of full motion video and graphics overlay).
CVBS/S-Video/Audio inputs.

	Multimedia GT2	Multimedia Windows
Processor:	Intel Celeron M 1,5 GHz	Intel Celeron M 1,5 GHz
Memory:	256 MB Compact Flash + 40 GB HDD 2,5 inch	40 GB HDD
DDRAM2:	512 MB	512 MB
Video Memory:	64MB (shared)	64MB (shared)
Network:	Ethernet 10/100 BaseT network adapter	Ethernet 10/100 BaseT network adapter
Serial Interface:	1 x RS 232, 1 x RS 485, 2 x USB 2.0	1 x RS 232, 1 x RS 485, 2 x USB 2.0
Watchdog:	Hardware Watchdog	Hardware Watchdog
Software:	TCP/IP license, ROMDOS license, GT2 software installed on FlashDisk	Windows XP Embedded, installed on HDD

GEB8 Controller Options

HDD option	Compact Flash Card 1/2/4/8 GB (not for GEB8 Basic GT2 version)
CPU upgrade	Pentium M 1,8 GHz processor
Real time rotated video	For real-time video display in portrait mode applications (for Multimedia versions only)
Stereo TV-Tuner	(for Multimedia versions only)
Wireless LAN	For easy integration in any kind of network environment
Fibre Optic Module	100 Mbit (ST or SC connectors)
Isolated RS 485	Reliable function in different environment

Controls / Connectors

User controls:	Mains switch
Control of display functions:	Via IR keyboard or via network
Connectors:	Mains: IEC connector Network: RJ45 connector RS 485: RJ11 connector RS 232: 9 Pin DSub connector
Connectors / optional:	Stereo audio in/out: Stereo Jack TV-tuner: IEC Fibre optic LAN: ST-connector (100 Base Fx) CVBS in: Cinch S-video in: 4-pole Mini-DIN

6046 PD (Monitor only)

Horizontal frequency:	30 – 80kHz
Vertical frequency:	50 – 85Hz
Pixelclock:	140MHz
Display resolutions:	640 x 400, 720 x 400, 640 x 480, 800 x 600, 832 x 624, 1024 x 768, 1280 x 768, 1366x768 , 1280 x 1024

Controls / Connectors

User controls:	Mains switch	
Control of display functions:	Via IR remote control, on-screen display RS 232	
Connectors:	Mains:	Euro connector with integrated fuse holder
	SCART 1/2:	RGB (1), CVBS in/out, audio in/out
	CVBS:	RCA –Cinch
	Y/C:	4-pole Mini-DIN
	PC (analog & digital):	DVI-I
	RS 232:	9 Pin DSub connector
	Stereo inputs:	3 x Cinch, 1 Vrms (CVBS, Y/C, PC)
	Stereo inputs:	2 x SCART, 1 Vrms
	Stereo line output:	1 x Cinch, controllable
	Stereo loudspeaker output:	1 x Cinch, 7W sinus @ 4Ohm

ENVIRONMENTAL CONDITIONS

Temperature::	0°C - + 40°C (operating), -20°C - +60°C (non-operating)
Humidity:	10% - 90% (non-condensing)

POWER

Power supply:	115V / 230V AC, 50 / 60Hz ±6%
Power consumption:	370W typical

APPROVALS

EMI/EMC:	EN55022 class A, EN55024, EN61000-3-2/-3
Safety:	EN60950, CE

SUPPLIED ACCESSORIES

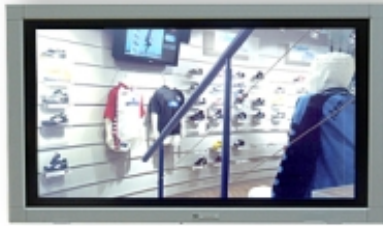
IR remote control (monitor-model only)
Operating Manual (English)
AC power cord 2.5m

STANDARD CABINET COLOUR

Standard colour cabinet:	RAL 9006 (white aluminium), powder coated
--------------------------	---

VERSIONS

IP20 protected version



H x W x D: 707mm x 1163mm x 149.5mm
 Weight: 38.4kg ±10%

IP54 protected version

Special casing for applications where dust and splash water are involved, front accessible for easy access.
 Climate control function for extended temperature range.

OEM versions

Customized versions available on request.

OPTIONS

* Please note: Not all options may be combined.

- Wall mount bracket
- Ceiling mount bracket
- Tilt wall mount
- Without safety/contrast enhancement panel
- IR keyboard (Graphic Engine Board-model only)

Technical specification subject to change without prior notice. GM 660.0172, bs_6046pd_GEB8_rev00

CONRAC GmbH
 Lindenstrasse 8
 D-97990 Weikersheim
 Germany
 Tel.: +49-7934-101 0
 Fax: +49-7934-101 101
 E-mail: info@conrac.de
 www.conrac.de

CONRAC France
 7 rue Saint Christophe
 60300 Baron
 France
 Tel.: +33-3-44 54 96 99
 Fax: +33-3-44 58 55 09
 E-mail: info@conracfrance.fr
 www.conrac.fr

CONRAC Sales Office Italy
 Via R. R. Garibaldi 30
 I-00145 Rome
 Italy
 Tel.: +39-06-45 43 92 02
 Fax: +39-06-45 43 91 79
 E-mail: info@conrac.it
 www.conrac.it

CONRAC Sales Office
 Northern Europe
 Pålsgöatan 66
 S-25440 Helsingborg
 Sweden
 Tel.: +46-42-212 939
 Fax: +46-42-212 948
 E-mail: info@conrac.se
 www.conrac.se

CONRAC MENA FZE
 DAFZA Dubai Airport Free Zone
 3E G06 East Wing 3
 P.O. Box 54592
 Dubai, United Arab Emirates
 Tel.: +9714-29 94 009
 Fax: +9714-29 95 587
 E-mail: info@conrac.ae
 www.conrac.ae

CONRAC Asia
 Display Products Pte Ltd.
 82 Genting Lane #05-04
 Singapore 349567
 Tel.: +65-67 42 79 88
 Fax: +65-67 47 39 33
 E-mail: sales@conrac-asia.com
 www.conrac-asia.com